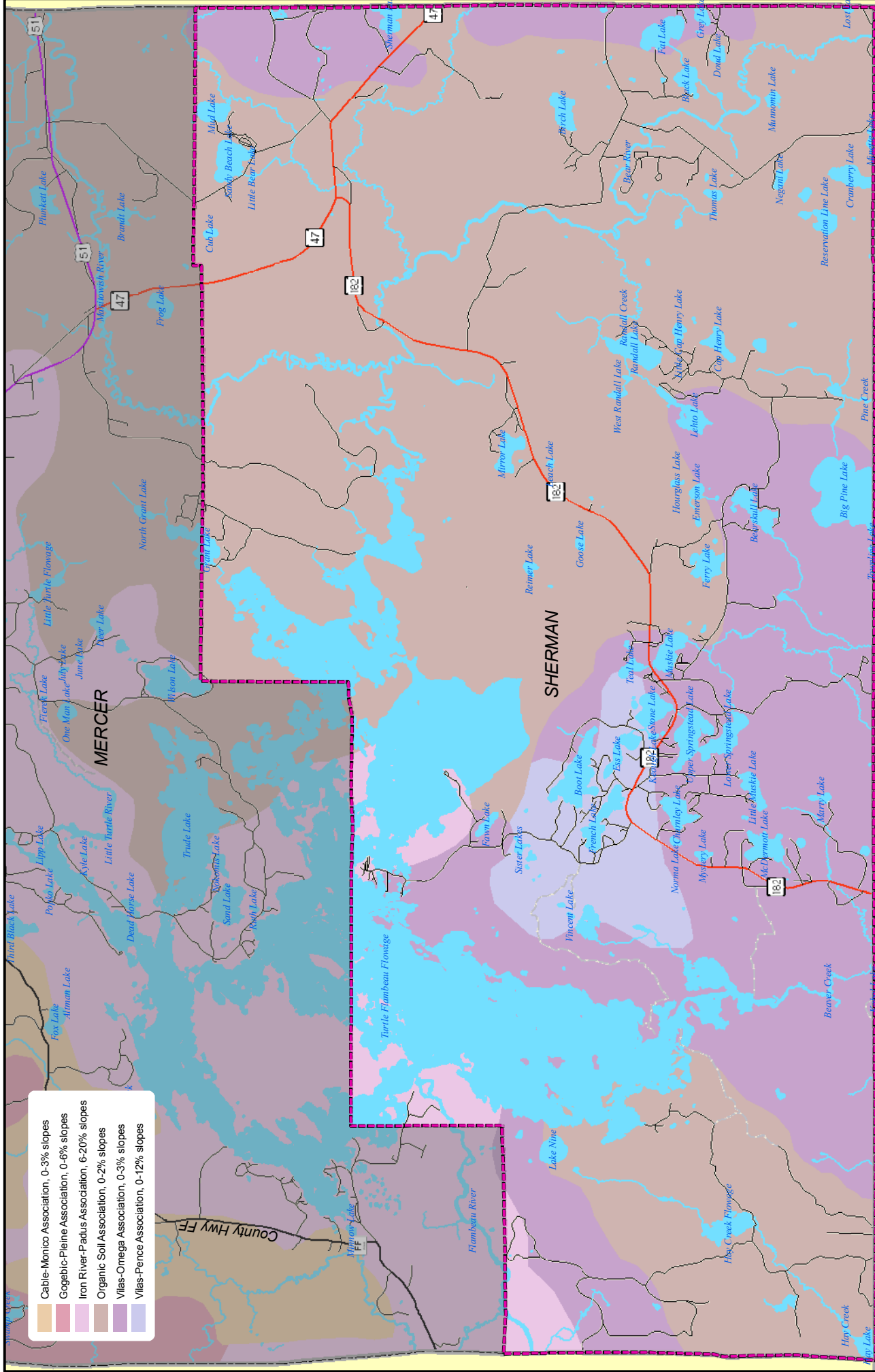


Generalized Soils, Town of Sherman

Map 5.4

- Cable-Monico Association, 0-3% slopes
- Gogebic-Plaine Association, 0-6% slopes
- Iron River-Padus Association, 6-20% slopes
- Organic Soil Association, 0-2% slopes
- Vilas-Omega Association, 0-3% slopes
- Vilas-Pence Association, 0-12% slopes



1:110,000

Source: Wisconsin Department of Natural Resources

Price County

Vilas County