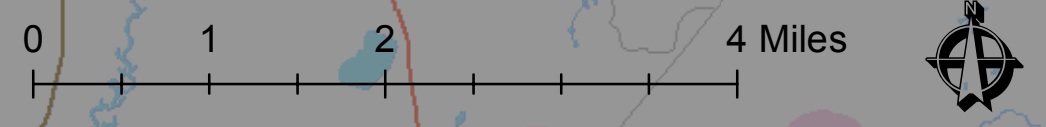
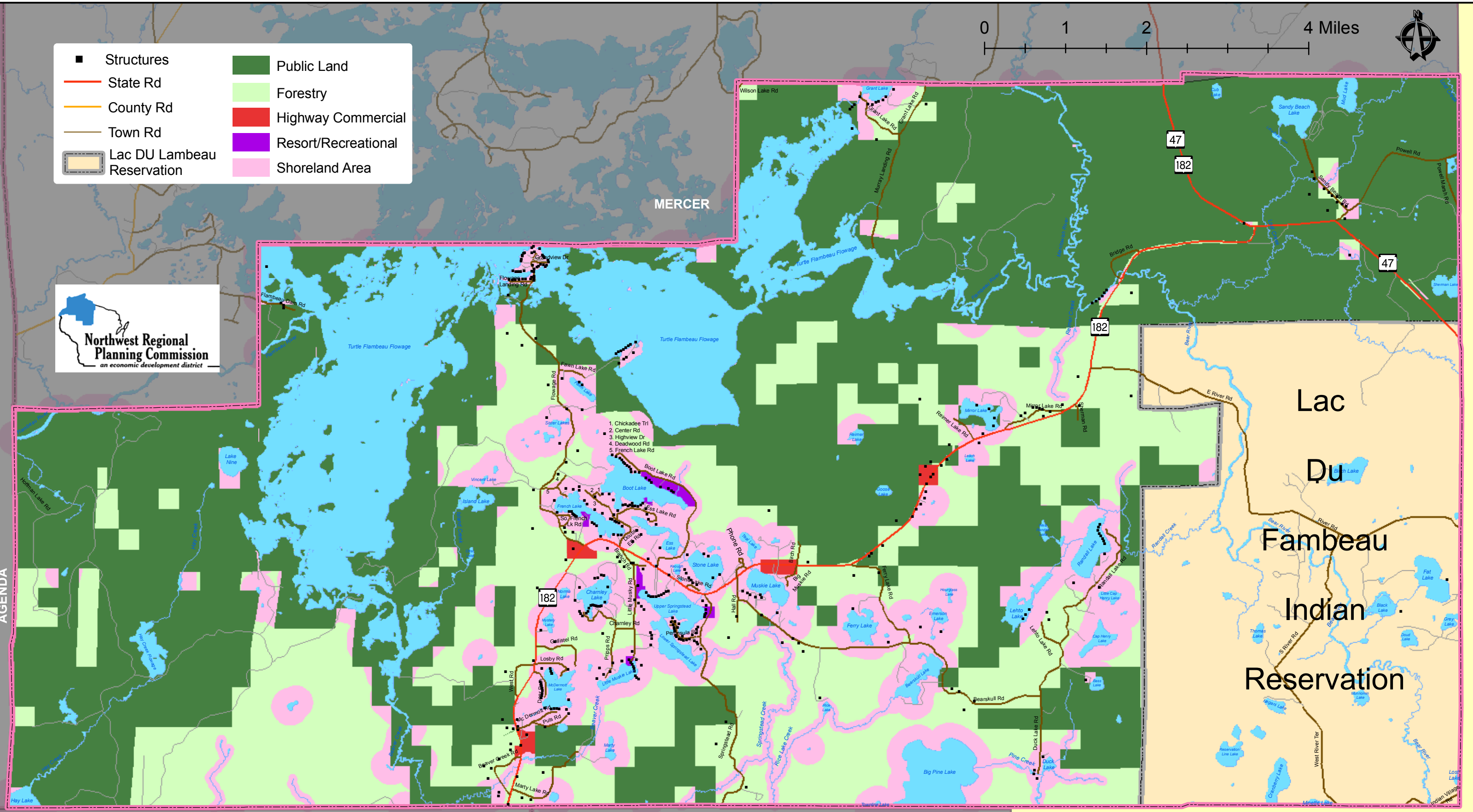


Town of Sherman, Future Land Use

| | |
|------------------------------|-----------------------|
| ■ Structures | ■ Public Land |
| — State Rd | ■ Forestry |
| — County Rd | ■ Highway Commercial |
| — Town Rd | ■ Resort/Recreational |
| ▭ Lac DU Lambeau Reservation | ■ Shoreland Area |



AGENDA



EISENSTEIN

FIFIELD

Source: WI DNR,
Northwest Regional
Planning Commission

Vilas County

Lac
Du
Fambeau
Indian
Reservation