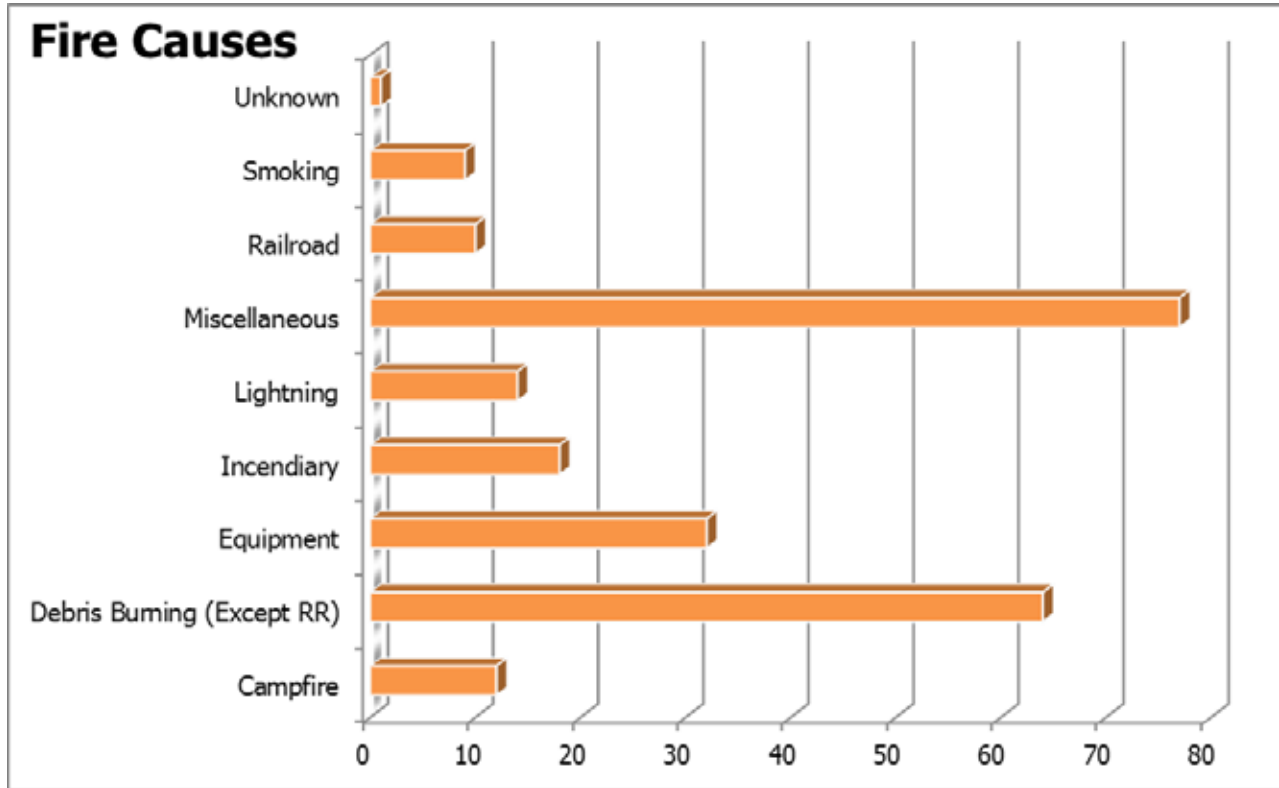


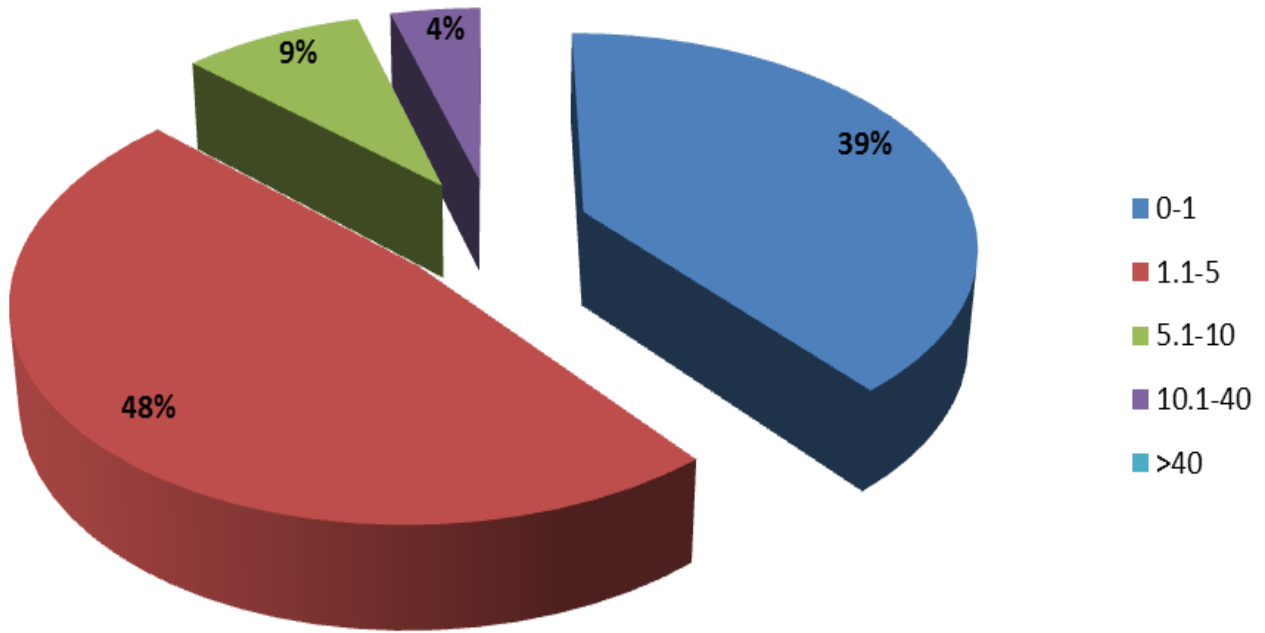
Northern Washburn County Fire Data and Statistics 1982-2010



Cause	# of Fires
Campfire	12
<i>Beer or Drug Party</i>	1
<i>Cooking</i>	6
<i>Group Party</i>	3
<i>Warming</i>	2
Debris Burning (Except RR)	64
<i>Broadcast (1/2 acre or less)</i>	5
<i>Broadcast (Over 1/2 acre)</i>	1
<i>Brush Piles</i>	26
<i>Dumps (Municipal)</i>	5
<i>Household Trash (Not in container)</i>	4
Incinerator, Burning Barrel	9
<i>Leaf/Needle Piles</i>	9
<i>Other</i>	5

Equipment	32
<i>Bus or truck exhaust (Any vehicle larger than a pickup)</i>	4
<i>Car exhaust (Autos, SUVs, vans, pickups, etc.)</i>	2
<i>Cutting torch</i>	5
Equipment sparks (non-exhaust) (e.g., road grader blade scattering sparks, etc.)	5
<i>Non-road logging or farm equipment</i>	3
<i>Off-road Recreation vehicle</i>	3
<i>Other</i>	7
<i>Vehicle or aircraft crash</i>	3
Incendiary	18
<i>Arson of buildings or cars</i>	1
<i>Excitement</i>	9
<i>Other</i>	8
Lightning	14
<i>Lightning</i>	14
Miscellaneous	77
<i>Experimenting with fire</i>	5
<i>Fire Works</i>	14
<i>Improper Ash Disposal</i>	7
<i>Other</i>	13
<i>Playing with Matches</i>	4
<i>Power Line</i>	28
<i>Structure Fire</i>	6
Railroad	10
<i>Brake shoe RR-Shoe 61</i>	1
<i>Diesel engine</i>	3
<i>Other</i>	6
Smoking	9
<i>Landowner (owner of lands at origin, or his/her immediate family)</i>	4
<i>Motorist</i>	1
<i>Other</i>	1
<i>Sportsman (Hunting, fishing or trapping)</i>	1
<i>Visitor</i>	2
Unknown	1
<i>Unknown</i>	1
Grand Total	237

Total Acres

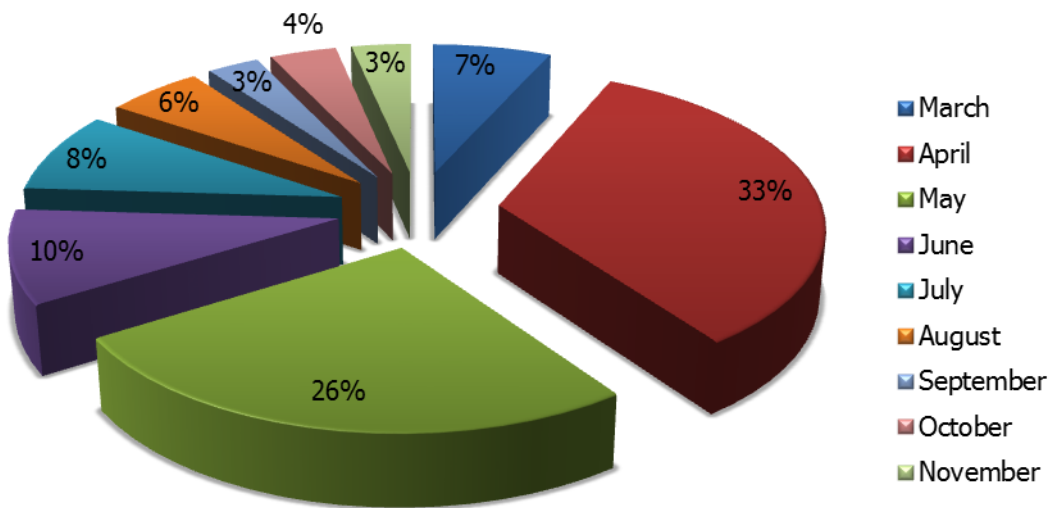


The average area burned per wildfire for the years 1982-2010 was .92 acres.

Acres Burned	
0-1	18
1.1-5	22
5.1-10	4
10.1-40	2
>40	0

Fires by Year			
1987	20	1989	7
2007	17	1991	7
1988	16	1994	7
2000	15	2002	7
1990	14	2010	7
2003	14	1984	6
1985	13	1997	5
1996	12	1995	4
1998	11	2008	4
2005	11	1986	3
1993	10	1983	2
1999	10	1992	2
2009	8	2001	2

Fire Occurrences by Month



Month	# of fires
March	16
April	79
May	62
June	23
July	20
August	13
September	7
October	9
November	8